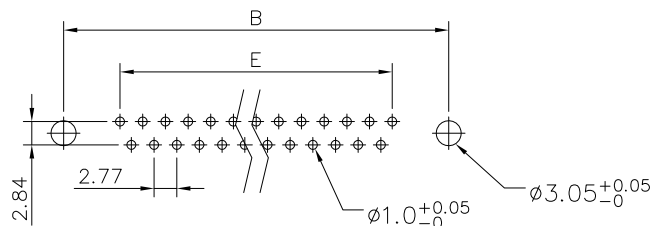
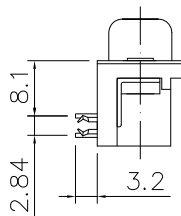
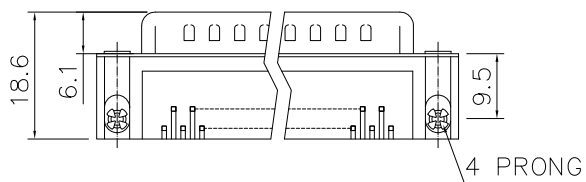
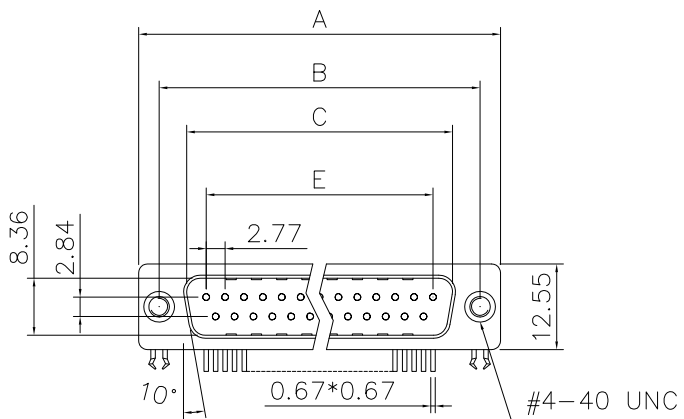


This document is the property of Amphenol Corporation and is delivered on the express condition that it is not to be disclosed, reproduced or used, in whole or in part, for manufacture or sale by anyone other than Amphenol Corporation without its prior consent, & that no right is granted to disclose or to use any information in this document.

Customer drawing



RECOMMENDED P.C.B LAYOUT
(TOLERANCE +/-0.05)



Dimensions

| Shell Size | Positions | A | B | C | E |
|------------|-----------|-------|-------|-------|-------|
| E | 9 | 30.81 | 24.99 | 16.92 | 11.08 |
| A | 15 | 39.20 | 33.30 | 25.25 | 19.39 |
| B | 25 | 53.05 | 47.04 | 38.96 | 33.24 |
| C | 37 | 69.40 | 63.50 | 55.42 | 49.86 |

REVISIONS

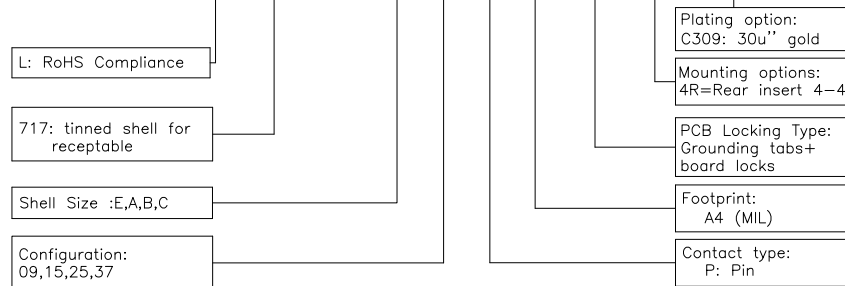
| SYM | ECN | DESCRIPTION | DATE | APPROVED |
|-----|------|-----------------------|----------|-----------|
| 1 | HK-- | First Release Drawing | 10/23/08 | IP |
| 2 | HK-- | Update the drawing | 07/15/10 | IP |
| 3 | HK-- | Update the drawing | 04/15/14 | IP |
| 4 | HK-- | Added pin OD | 08/09'22 | Tony.Tang |

D-SUB TECHNICAL DATA

SHELL: Steel, 100u" min Tin over 50u" min Nickel over 50u" min Copper
 BODY: Glass-Filled Thermoplastic PBT, UL94 V-0
 CONTACTS: Copper Alloy
 30u" gold over 50u" min nickel on mating area
 100u" min tin over 50u" min nickel on solder area
 BOARDLOCK: Copper Alloy, 100u" min tin over 50u" min nickel
 CLINCH NUT: Copper Alloy, 50u" nickel Plated.
 ELECTRICAL: Voltage Rating 250 VAC Rms Max.
 Current Rating 3A.
 Withstanding Voltage >1000 V Rms.
 Insulation Resistance >1000 M Ohms
 Contact Resistance 20 mOhms max
 MARKING: Amphenol...(Series No.)
 Commercial Reference
 Manufacturing Date

PRODUCT CODE

L 717 SD X XX P A4 CH 4R C309



| UNLESS OTHERWISE SPECIFIED TOLERANCES | APPROVAL | | DATE |
|---------------------------------------|----------|---------------------|--------------------|
| | U.S. | METRIC | |
| .X +/- | 0.50 | DRAWN | Bella.Wu 08/09'22 |
| .XX +/- | 0.30 | CHECKED | Tony.Tang 08/09'22 |
| .XXX +/- | 0.20 | CHECKED | |
| FRACTIONS +/- | | DRAWING FILE : | |
| ANGLES +/- | 5' | ANGLE OF PROJECTION | |
| FOR MATERIALS AND FINISHES SEE NOTES | | | |
| REMOVE SHARP EDGES | | DIMENSIONS | |
| | | U.S. INCHES | |
| | | METRIC MM | |

| | | |
|--|----------------------|--------------|
| Amphenol | | |
| TITLE D-sub connector, SD series, R/A | | |
| SIZE | DRAWING NO. | REV. |
| A4 | L717SDXXXPA4CH4RC309 | 3 |
| SCALE | NONE | SHEET 1 OF 1 |